



Innocademy Allegan  
Campus

2611 56th Street  
Fennville, MI  
(269) 561-4050

February 17, 2026

Dear Parents and Community Members:

We are pleased to present you with the Annual Education Report (AER), which provides key information on the 2024-25 educational progress for Innocademy Allegan Campus. The AER addresses the complex reporting information required by federal and state laws. The school's report contains information about accountability, student assessment, and teacher quality. If you have any questions about the AER, please contact Mykie Reilly for assistance.

The AER is available for you to review electronically by visiting the following website: [Innocademy Allegan Campus Annual Education Report](#), or you may review a copy in the main office at your child's school.

For the 2025-26 school year, schools were identified based on previous years' performance using definitions and labels as required in the Every Student Succeeds Act (ESSA). A Targeted Support and Improvement (TSI) school is one that had at least one underperforming student group in 2024-25. An Additional Targeted Support (ATS) school is one that had at least one student group performing at the same level as the lowest 5% of all schools in the state in 2021-22. A Comprehensive Support and Improvement (CSI) school is one whose performance was in the lowest 5% of all schools in the state, had a graduation rate at or below 67%, failed to exit CSI status in 2024-25, or failed to exit ATS status in 2021-22. Some schools are not identified with any of these labels. In these cases, no status label is given.

Our school has not been given one of these labels.

Looking at the 2024-2025 M-STEP data, we noticed that the assessment was a challenge for all our students but especially for our students in 4th grade and 6th-8th Grade in both Reading and Math. Given this information, we are examining both our reading and math curricular resources and their design given our multiage classroom settings and their inquiry-based approach to instruction. In addition, our focus for this year is to look at our Tier 2 reading instruction. Finally, the PSAT data from the state doesn't provide much information because of the low number of students who took the assessment. Because of this, we will look at the private level data for a deeper analysis.

State law requires that we also report additional information.

1. Process for Assigning Pupils to the School

Innocademy Allegan Campus has an open enrollment policy and does not discriminate on the basis of intellectual or physical abilities, achievement or aptitude, religion, race, or gender. In the event student enrollment applications exceed available positions, a random selection lottery drawing is conducted under the direction of a representative of the authorizer Lake Superior State University.



Innocademy Allegan  
Campus

2611 56th Street  
Fennville, MI  
(269) 561-4050

## 2. The Status of the 3-5 Year School Improvement Plan

We've implemented a new ELA and math curriculum as part of our continuous improvement plan. We have identified the need to review AMPLIFY Reading Curricular Resource as its design is very difficult to implement in a multiage classroom setting.

## 3. A Brief Description of Each Specialized School

Not applicable.

## 4. Identify How to Access a Copy of the Core Curriculum, a Description of Its Implementation, and an Explanation of the Variances from the State's Model

Our core curriculum is published in both our Family Resource Guide and on our website. Any questions or concerns can be directed to Erin Wyma, administrator. Innocademy Allegan Campus will continue to follow Common Core state standards. These standards can be located at [www.corestandards.org](http://www.corestandards.org). In order to implement these standards, we use approved resources, such as Amplify Highlights and Benchmark Taller; Investigations in Numbers, Data, and Space (k-5th) and Connected Mathematics Project 3 (6th -8th), Mystery Science (k-5th), Project Learning Tree and Project Wild, Outdoor Discovery Center partnership, and Social Studies Alive (TCI).

To strengthen our academic program, Innocademy Allegan Campus implements additional opportunities for growth, such as Multi-Age Collaboration, Nature-based curriculum through a partnership with Outdoor Discovery Center, Stewardship, and Capstone Trips: Extended Field Experiences.

## 5. The Aggregate Student Achievement Results for Any Local Competency Tests or Nationally Normed Achievement Tests

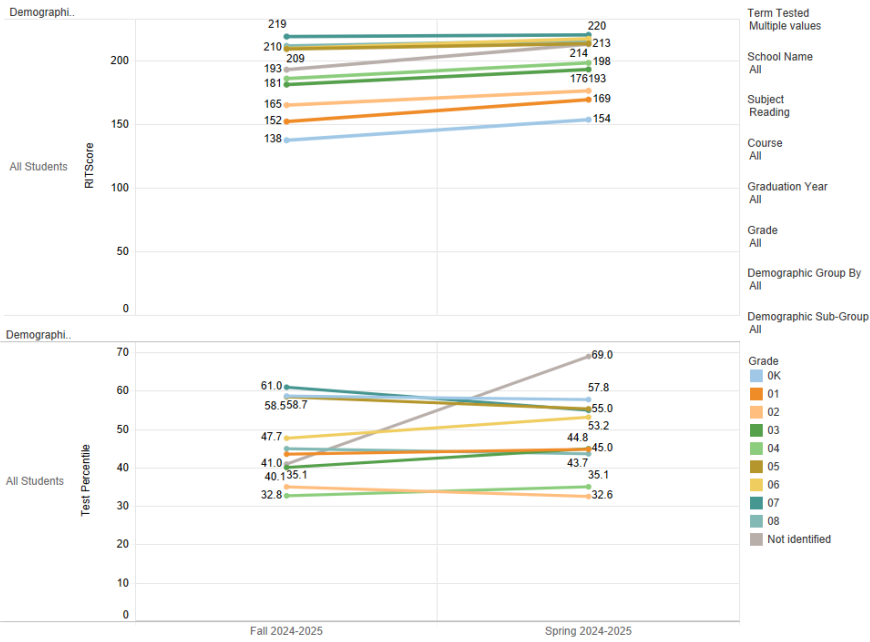


# Innocademy Allegan Campus

2611 56th Street  
Fennville, MI  
(269) 561-4050

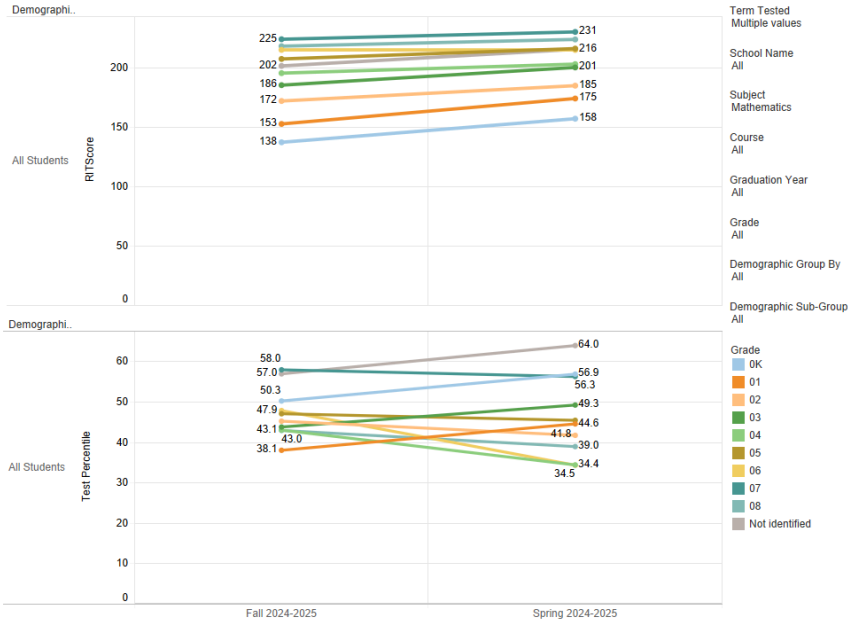
## District Trend - Subject: Reading - Graduation Year: All

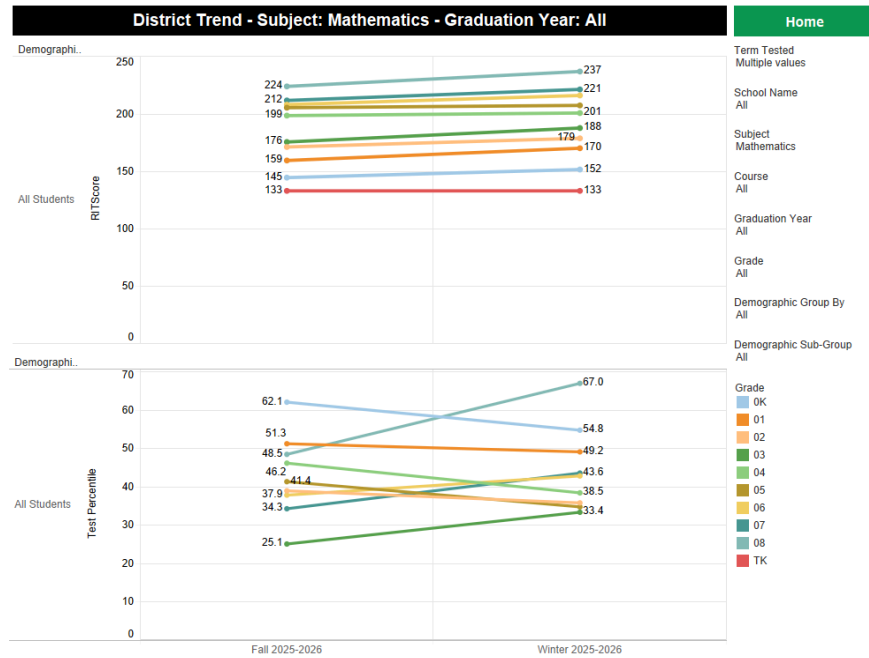
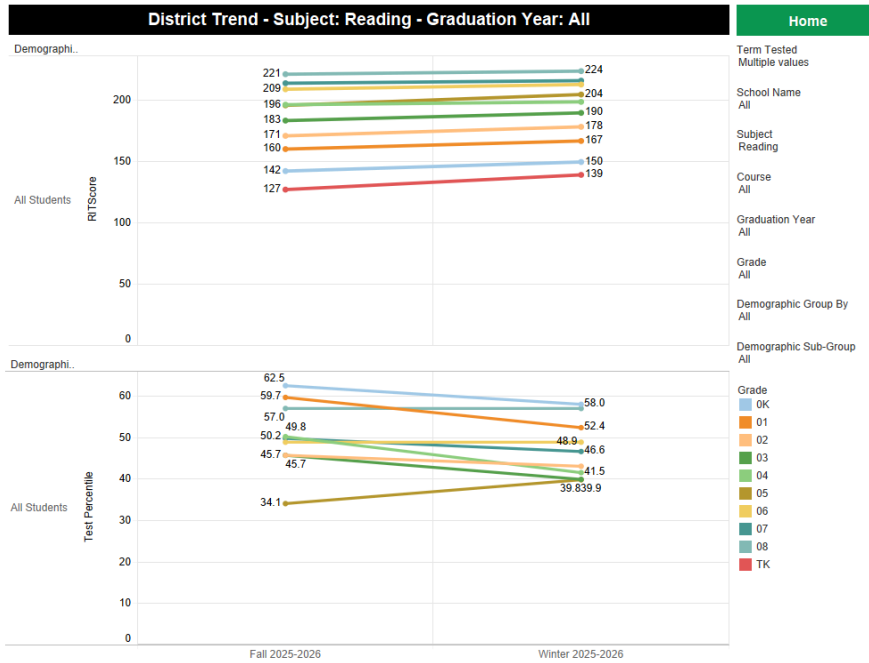
[Home](#)



## District Trend - Subject: Mathematics - Graduation Year: All

[Home](#)





6. Identify the Number and Percent of Students Represented by Parents at Parent-Teacher Conferences



Innocademy Allegan  
Campus

2611 56th Street  
Fennville, MI  
(269) 561-4050

This past fall we had 86% participation. We attribute this to a very small number of 6th8th grade students whose parents attend. We plan to work on this by ensuring that communication is made with parents who do not show and that we reschedule those.

On behalf of the Innocademy Allegan Campus staff, we would like to thank all of those who have helped make our school an amazing place for children to learn. Your patience, persistence, and willingness for change made this year possible.

Sincerely,

*Mykie Peilly*