



Innocademy Allegan
Campus

2611 56th Street
Fennville, MI
(269) 561-4050

February 9, 2024

Dear Parents and Community Members:

We are pleased to present you with the Annual Education Report (AER), which provides key information on the 2022-23 educational progress for Innocademy Allegan Campus. The AER addresses the complex reporting information required by federal and state laws. The school's report contains information about student assessment, accountability, and teacher quality. If you have any questions about the AER, please contact Jake Hedges for assistance.

The AER is available for you to review electronically by visiting the following website [MiSchoolData](#), or you may review a copy in the main office at your child's school.

For the 2023-24 school year, schools were identified based on previous years' performance using definitions and labels as required in the Every Student Succeeds Act (ESSA). A Targeted Support and Improvement (TSI) school is one that had at least one underperforming student subgroup in 2022-23. An Additional Targeted Support (ATS) school is one that had a student subgroup performing at the same level as the lowest 5% of all schools in the state in 2021-22. A Comprehensive Support and Improvement (CSI) school is one whose performance was in the lowest 5% of all schools in the state or had a graduation rate at or below 67% in 2021-22. Some schools are not identified with any of these labels. In these cases, no label is given.

Our school has not been given one of these labels.

We recognized through our Continuous Improvement Process that our State math and ELA scores were low. As a result, we've implemented several strategies and are on target with our improvement plan: we – a cross section of teachers, staff, and administrators - reviewed our current curriculum. We purchased a new math curriculum and implemented it during the 2021-2022 school year and have purchased a new ELA curriculum during the 2022-2023, which will be implemented during the 2023-2024 school year. We offered professional development as the new math curriculum was implemented and are doing the same with the ELA curriculum. Moreover, we have increased our intervention support for math.

State law requires that we also report additional information.

PROCESS FOR ASSIGNING PUPILS TO THE SCHOOL

Innocademy Allegan Campus has an open enrollment policy and does not discriminate on the basis of intellectual or physical abilities, achievement or aptitude, religion, race, or gender. In the event student enrollment applications exceed available positions, a random selection lottery drawing is conducted under the direction of a representative of the authorizer Lake Superior State University.

THE STATUS OF THE 3-5 YEAR SCHOOL IMPROVEMENT PLAN

We have a teacher-led Continuous Improvement Team that has worked closely with a consultant for the past three years to ensure we are on track and compliant with our Continuous Improvement Plan. Because of the previous work and guidance with the consultant, we are now confidently leading the process. We have identified math and ELA as areas of growth, and through our on-going monitoring, we can say that our strategies and action steps for increasing our math assessment results are on target. We have begun to monitor our ELA goals and strategies. Staff are working with students' math and ELA goals to implement innovative best practices using our newly purchased math and ELA curricula. Within the continuous improvement process, staff can analyze data and adjust instruction with a goal of improving student learning, as well as provide opportunities for flexible groupings (just right learning groups).

A BRIEF DESCRIPTION OF EACH SPECIALIZED SCHOOL

Not applicable

IDENTIFY HOW TO ACCESS A COPY OF THE CORE CURRICULUM, A DESCRIPTION OF ITS IMPLEMENTATION, AND AN EXPLANATION OF THE VARIANCES FROM THE STATE'S MODEL

Our core curriculum is published in both our Family Resource Guide and on our website. Any questions or concerns can be directed to Jessenia Martinez, administrator. Innocademy Allegan Campus will continue to follow Common Core state standards. These standards can be located at www.corestandards.org. In order to implement these standards, we use approved resources, such as Amplify Highlights, Benchmark Taller, and Espanol 7; Investigations in Numbers, Data, and Space (k-5 th) and Connected Mathematics Project 3 (6th -8 th), Mystery Science (k-5 th), Project Learning Tree and Project Wild, Outdoor Discovery Center partnership, and Social Studies Alive (TCI). The school's curriculum can be found on our website.

Innocademy Allegan Campus offers Just Right Learning groups to meet the students' individual needs. This is a three-prong approach, which includes using academic data, social readiness,

and parent conferences. To strengthen our academic program, Innocademy Allegan Campus implements additional experiences, such as Multi-Age Collaboration, Nature-based curriculum through a partnership with Outdoor Discovery Center, Stewardship, Capstone Trips: Extended Field Experiences, Special Education, Seven Habits of Happy Kids and Community Partnerships, 1:1 device, and MTSS academic and behavior program.

Innocademy Allegan Campus offers a high quality, college and career-ready education within an environment that focuses on the development of the whole child and integrates global awareness and acquisition of 21st Century Skills. Our students will graduate from high school and participate in post-secondary education having demonstrated the skills needed to become an active and productive citizen in a global community.

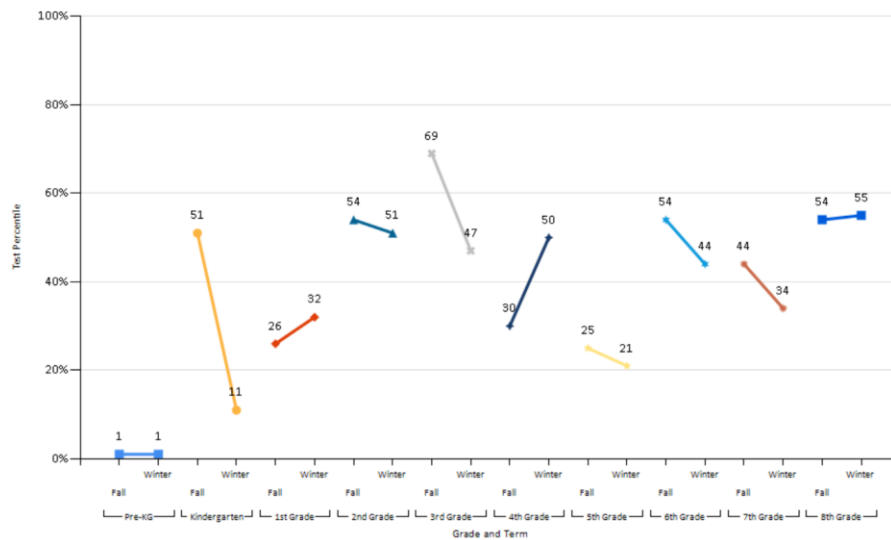
THE AGGREGATE STUDENT ACHIEVEMENT RESULTS FOR ANY LOCAL COMPETENCY TESTS OR NATIONALLY NORMED ACHIEVEMENT TESTS

2023-2024 (Fall to Winter NWEA)

MAP National Percentile - School

District: Innocademy Allegan Campus
 School: Innocademy Allegan Campus
 School Year: 2023-2024

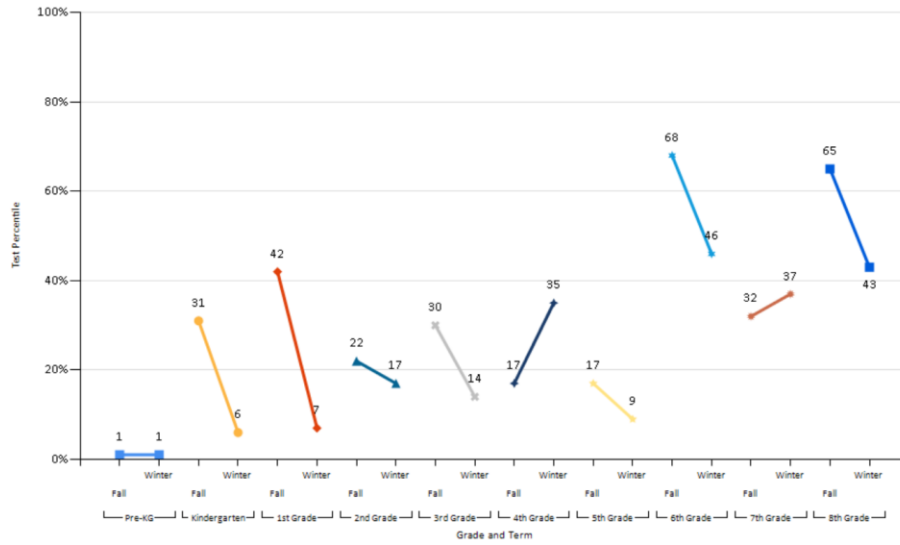
Subject: Mathematics
 Full Academic Year: No



MAP National Percentile - School

District: Innocademy Allegan Campus
 School: Innocademy Allegan Campus
 School Year: 2023-2024

Subject: Reading
 Full Academic Year: No

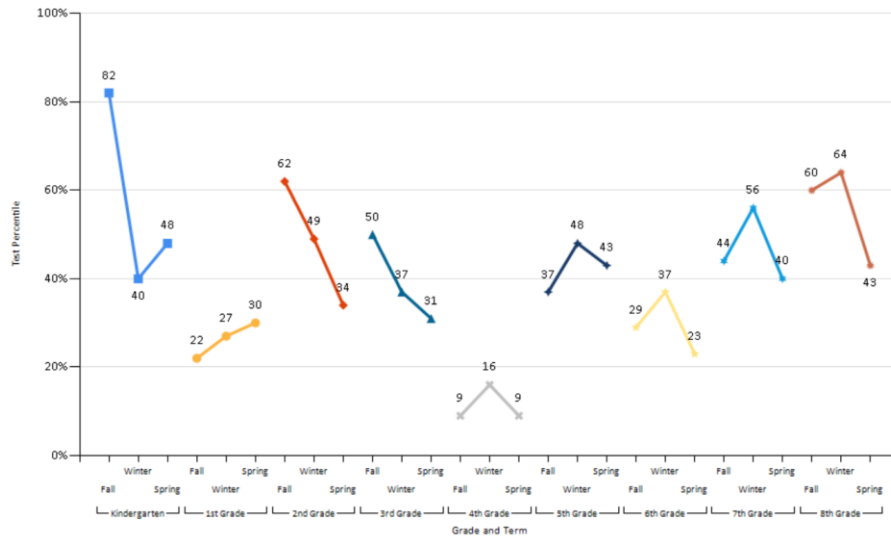


2022-2023 (Fall to Spring NWEA)

MAP National Percentile - School

District: Innocademy Allegan Campus
 School: Innocademy Allegan Campus
 School Year: 2022-2023

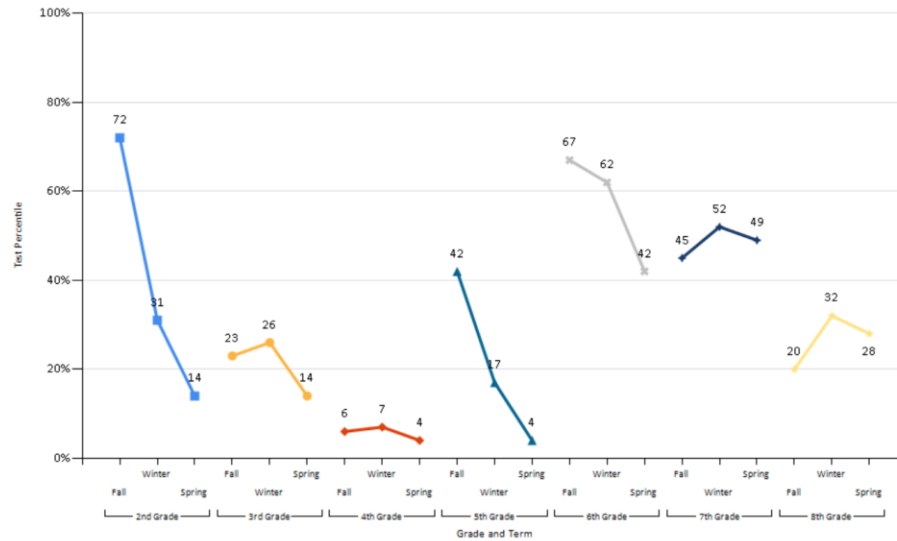
Subject: Mathematics
 Full Academic Year: Yes



MAP National Percentile - School

District: Innocademy Allegan Campus
School: Innocademy Allegan Campus
School Year: 2022-2023

Subject: Reading
Full Academic Year: Yes



IDENTIFY THE NUMBER AND PERCENT OF STUDENTS REPRESENTED BY PARENTS AT PARENT-TEACHER CONFERENCES

We offer opportunities for families to participate in student-led conferences twice a year; however, if families are unable to attend the scheduled dates and times, teachers will schedule a meeting that is convenient to everyone. This year, we had 88% participation rate with conferences. One of the reasons we attribute this high participation rate is by the choices we offer families. Families have the option to attend the conferences either in-person or virtually for those who have children in grades third and above. Last year, our participation rate was 85%, so we're pleased with the increase this year.

On behalf of the Innocademy Allegan Campus staff, we would like to thank all of those who have helped make our school an amazing place for children to learn. Your patience, persistence, and willingness for change made this year possible.

Sincerely,

Jake Hedges

School Administrator